



Substation Automation Unit  
SA310/SA320/SA330

IEC 61850 Communications Protocol

---

Reference Guide

Every effort has been made to ensure that the material herein is complete and accurate. However, the manufacturer is not responsible for any mistakes in printing or faulty instructions contained in this book. Notification of any errors or misprints will be received with appreciation.

For further information regarding a particular installation, operation or maintenance of equipment, contact the manufacturer or your local representative or distributor.

#### REVISION HISTORY

A1	Nov 2009	Initial release
A2	July 2010	Changed dataset names. Added aiGGIO and sbsLGOS logical nodes. Added process measurement limits for measured values. Added IEC 61850 configuration via PAS

# Table of Contents

<b>1</b>	<b>General</b>	<b>6</b>
<b>2</b>	<b>ACSI (Abstract Communication Service Interface) Conformance Statement</b>	<b>7</b>
2.1	ACSI basic conformance statement	7
2.2	ACSI models conformance statement	7
2.3	ACSI service conformance statement	8
<b>3</b>	<b>MICS - Model Implementation Conformance Statement</b>	<b>11</b>
3.1	Model conformance	11
3.2	Common data attributes classes	11
	Quality	11
	Analog value	11
	Configuration of analogue value	11
	Range configuration	11
	Step position with transient indication	11
	Pulse configuration	12
	Originator	12
	Unit definition	12
	Vector	12
	Point definition	12
	CtlModels definition	12
	SboClasses definition	12
	PackedInd32 definition	13
3.3	Common data classes	13
	Single point status (SPS)	13
	Double point status (DPS)	13
	Packed 32-bit status (PackBitSt32)	14
	Integer status (INS)	14
	Protection activation information (ACT)	14
	Directional protection activation information (ACD)	14
	Security violation counting (SEC)	14
	Binary counter reading (BCR)	14
	Measured value (MV)	14
	Complex measured value (CMV)	14
	Sampled value (SAV)	14
	WYE	15
	Delta (DEL)	15
	Sequence (SEQ)	15
	Harmonic value (HMV)	15
	Harmonic value for WYE (HWYE)	15
	Harmonic value for DEL (HDEL)	15
	Controllable single point (SPC)	16
	Controllable double point (DPC)	16
	Controllable integer status (INC)	16
	Binary controlled step position information (BSC)	16
	Binary controlled step position information (ISC)	16
	Controllable analog set point information (APC)	16
	Single point setting (SPG)	16
	Integer status setting (ING)	16
	Analog setting (ASG)	16
	Setting curve (CURVE)	17
	Device name plate (DPL)	17
	Logical node name plate (LPL)	17
	Curve shape description (CSD)	17

<b>3.4</b>	<b>Logical device and logical nodes</b>	<b>17</b>
3.4.1	System logical nodes: L group	17
	Physical device information (LPHD class)	17
	Logical node zero (LLNO class)	17
	GOOSE subscription: sbsLGOS1-sbsLGOS4	18
3.4.2	Logical nodes for protection related functions: R group	18
	Disturbance recorder function (RDRE class)	18
	Disturbance recorders: drRDRE1-drRDRE8	18
3.4.3	Logical nodes for generic reference: G group	18
	Generic process I/O (GGIO class)	18
	Digital inputs: biGGIO1-biGGIO6	18
	Relay outputs: boGGIO1-boGGIO8	19
	Event flags: evfGGIO1	19
	Setpoint status: spGGIO1	19
	Analog inputs: aiGGIO1-aiGGIO2	20
3.4.4	Logical nodes for control: C group	20
	Interlocking (CILO class)	20
	Relay blocking status: blkCILO1-blkCILO8	20
3.4.5	Logical nodes for metering and measurement: M group	21
	Metering (MMTR class)	21
	Energy counters: engMMTR1	21
	Harmonics (MHAI class)	21
	Harmonic demands: demMHAI1	21
	Sequence of harmonics: hrmMHAI1	21
	Total harmonics: ocvMHAI1	22
	3-second total harmonics: osvMHAI1	22
	Measurement (MMXU class)	22
	Present demands: demMMXU1	22
	Sliding power demands: demMMXU2	23
	Accumulated power demands: demMMXU3	23
	Predicted power demands: demMMXU4	24
	Half-cycle measurements: hcvMMXU1	24
	One-second measurements: osvMMXU1	24
	Phasors: phsrMMXU1	25
	Sequence and imbalance (MSQI class)	25
	Half-cycle sequence and imbalance : hcvMSQI1	25
	One-cycle imbalance: ocvMSQI1	26
	Sequence components: seqMSQI1	26
	Metering statistics (MSTA class)	26
	Minimum/maximum on any phase: ocvMSTA1, osvMSTA1	26
<b>4</b>	<b>PICS – Protocol Implementation Conformance Statement</b>	<b>28</b>
4.1	Profile conformance	28
	A-Profile support	28
	T-Profile support	28
4.2	MMS conformance	28
4.3	GOOSE conformance statement (GOOSE Services)	30
4.4	GSSE conformance statement (GSSE Services)	30
4.5	SCL services (SCL conformance)	30
<b>5</b>	<b>PIXIT - Protocol Implementation Extra Information for Testing</b>	<b>31</b>
5.1	Device configuration	31
5.2	ACSI models	31
	Association model	31
	Server model	31
	Setting group model	31
	Dataset model	32
	Predefined Dataset members	32
	Reporting model	34

Report Control Blocks predefined attribute values .....	34
Report service information .....	34
Control model .....	35
GOOSE Publisher model .....	35
GOOSE Subscriber model .....	35
Time and time synchronization model .....	35
File transfer model .....	36
<b>5.3 Impact of the device settings.....</b>	<b>36</b>
Logical device mode .....	36
Controls .....	36
Measurement units .....	36
Process Measurement Limits.....	36
Deadbands .....	37
Textual descriptions .....	37
<b>6 Configuring IEC 61850.....</b>	<b>38</b>
<b>6.1 Licensing IEC 61850.....</b>	<b>38</b>
<b>6.2 Configuring the GOOSE Publisher .....</b>	<b>38</b>
<b>6.3 Configuring the GOOSE Subscriber .....</b>	<b>39</b>
<b>6.4 Configuring Report Deadbands.....</b>	<b>43</b>

# 1 General

The SA300 is provided with an embedded IEC 61850 server compliant with the IEC 61850 set of standards.

This document contains the IEC 61850 conformance statements that give the summary of the device data object model, protocol implementations and communication capabilities of the SA300.

For detailed information on operating the SA300 and communication settings refer to the SA300 Operation Manual.

## 2 ACSI (Abstract Communication Service Interface) Conformance Statement

This chapter contains the ACSI conformance statement as defined in Annex A of IEC 61850-7-2 that specifies the device communication features mapped to an SCSM (Specific Communication Service Mapping).

### 2.1 ACSI basic conformance statement

Services		Client/ Subscriber	Server/ Publisher	Value/ Comments
<b>Client-server roles</b>				
B11	Server side (of TWO-PARTY-APPLICATION-ASSOCIATION)		● c1	
B12	Client side of (TWO-PARTY-APPLICATION-ASSOCIATION)			
<b>SCSMs supported</b>				
B21	SCSM: IEC 61850-8-1 used		●	
B22	SCSM: IEC 61850-9-1 used			
B23	SCSM: IEC 61850-9-2 used			
B24	SCSM: other			
<b>Generic substation event model (GSE)</b>				
B31	Publisher side		●	
B32	Subscriber side	●		
<b>Transmission of sampled value model (SVC)</b>				
B41	Publisher side			
B42	Subscriber side			
c1– declared support for LOGICAL-DEVICE model ● – supported				

### 2.2 ACSI models conformance statement

Services		Client/ Subscriber	Server/ Publisher	Value/ Comments
<b>If Server side (B11) supported</b>				
M1	Logical device		● c2	
M2	Logical node		● c3	
M3	Data		● c4	
M4	Data set		● c5	
M5	Substitution			
M6	Setting group control			
<b>Reporting</b>				
M7	Buffered report control		●	
M7-1	sequence-number		●	
M7-2	report-time-stamp		●	
M7-3	reason-for-inclusion		●	
M7-4	data-set-name		●	
M7-5	data-reference		●	
M7-6	buffer-overflow		●	
M7-7	entryID		●	
M7-8	BufTm		●	
M7-9	IntgPd		●	
M7-10	GI		●	
M8	Unbuffered report control		●	
M8-1	sequence-number		●	
M8-2	report-time-stamp		●	
M8-3	reason-for-inclusion		●	
M8-4	data-set-name		●	

Services		Client/ Subscriber	Server/ Publisher	Value/ Comments
M8-5	data-reference		●	
M8-6	BufTm		●	
M8-7	IntgPd		●	
M8-8	GI		●	
	Logging			
M9	Log control			
M9-1	IntgPd			
M10	Log			
M11	Control		●	
<b>If GSE (B31/B32) is supported</b>				
	<b>GOOSE</b>			
M12-1	entryID			
M12-2	DataRefInc			
M13	<b>GSSE</b>			
<b>If SVC (B41/B42) is supported</b>				
M14	Multicast SVC			
M15	Unicast SVC			
M16	Time		●	Time source with required accuracy shall be available
M17	File Transfer		●	
c2 – declared support for LOGICAL-NODE model c3 – declared support for DATA model c4 – declared support for DATA-SET, Report, or Time model c5 – declared support for Report model ● – supported				

## 2.3 ACSI service conformance statement

AA – APPLICATION-ASSOCIATION; TP – TWO- PARTY; MC – Multicast

Services		AA: TP/MC	Client/ Subscriber	Server/ Publisher	Comments
<b>Server (Clause 6)</b>					
S1	ServerDirectory	TP		●	
<b>Application association (Clause 7)</b>					
S2	Associate			●	
S3	Abort			●	
S4	Release			●	
<b>Logical device (Clause 8)</b>					
S5	LogicalDeviceDirectory	TP		●	
<b>Logical node (Clause 9)</b>					
S6	LogicalNodeDirectory	TP		●	
S7	GetAllDataValues	TP		●	
<b>Data (Clause 10)</b>					
S8	GetDataValues	TP		●	
S9	SetDataValues	TP			
S10	GetDataDirectory	TP		●	
S11	GetDataDefinition	TP		●	
<b>Data set (Clause 11)</b>					
S12	GetDataSetValues	TP		●	
S13	SetDataSetValues	TP		●	
S14	CreateDataSet	TP		●	
S15	DeleteDataSet	TP		●	
S16	GetDataSetDirectory	TP		●	
<b>Substitution (Clause 12)</b>					
S17	SetDataValues	TP			

Services		AA: TP/MC	Client/ Subscriber	Server/ Publisher	Comments
<b>Setting group control (Clause 13)</b>					
S18	SelectActiveSG	TP			
S19	SelectEditSG	TP			
S20	SetSGValues	TP			
S21	ConfirmEditSGValues	TP			
S22	GetSGValues	TP			
S23	GetSGCBValues	TP			
<b>Reporting (Clause 14)</b>					
Buffered report control block (BRCB)					
S24	Report	TP		●	
S24-1	data-change (dchg)			●	
S24-2	qchg-change (qchg)			●	
S24-3	data-update (dupd)			●	
S25	GetBRCBValues	TP		●	
S26	SetBRCBValues	TP		●	
Unbuffered report control block (URCB)					
S27	Report	TP		●	
S27-1	data-change (dchg)			●	
S27-2	qchg-change (qchg)			●	
S27-3	data-update (dupd)			●	
S28	GetURCBValues	TP		●	
S29	SetURCBValues	TP		●	
<b>Logging (Clause 14)</b>					
Log control block					
S30	GetLCBValues	TP			
S31	SetLCBValues	TP			
Log					
S32	QueryLogByTime	TP			
S33	QueryLogAfter	TP			
S34	GetLogStatusValues	TP			
<b>Generic substation event model (GSE) (Clause 15)</b>					
GOOSE-CONTROL-BLOCK					
S35	SendGOOSEMessage	MC		●	
S36	GetGoReference	TP			
S37	GetGOOSEElementNumber	TP			
S38	GetGoCBValues	TP		●	
S39	SetGoCBValues	TP		●	
GSSE-CONTROL-BLOCK					
S40	SendGSSEMessage	MC			
S41	GetGsReference	TP			
S42	GetGSSEElementNumber	TP			
S43	GetGsCBValues	TP			
S44	SetGsCBValues	TP			
<b>Transmission of sampled value model (SVC) (Clause 16)</b>					
Multicast SVC					
S45	SendMSVMessage	MC			
S46	GetMSVCBValues	TP			
S47	SetMSVCBValues	TP			
Unicast SVC					
S48	SendUSVMessage	TP			
S49	GetUSVCBValues	TP			
S50	SetUSVCBValues	TP			
<b>Control (Clause 17)</b>					
S51	Select	TP		●	
S52	SelectWithValue	TP			
S53	Cancel	TP		●	

Services		AA: TP/MC	Client/ Subscriber	Server/ Publisher	Comments
S54	Operate	TP		●	
S55	Command-Termination	TP			
S56	TimeActivated-Operate	TP			
<b>File transfer (Clause 20)</b>					
S57	GetFile	TP		●	
S58	SetFile	TP			
S59	DeleteFile	TP			
S60	GetFileAttributeValues	TP		●	
<b>Time (Clause 18)</b>					
T1	Time resolution of internal clock (nearest value of 2** -n in seconds)			n=10 (T1)	
T2	Time accuracy of internal clock			n=10 (T1)	
T3	Supported TimeStamp resolution (nearest value of 2** -n in seconds)			n=10 (T1)	
● – supported					

### 3 MICS - Model Implementation Conformance Statement

This chapter contains the MICS conformance statement as required by IEC 61850-10. It lists data object model elements supported by the SA300 and provides definitions of the logical nodes, common data classes and data attribute types as defined in IEC 61850-7-3 and IEC 61850-7-4.

#### 3.1 Model conformance

The model conformance of the SA300 is described by its ICD file.

#### 3.2 Common data attributes classes

The following tables indicate which fields are supported in each Common Data Attribute Class. Not listed fields are either optional (O) or conditional (C) and are not supported by the SA300. Mandatory fields (M) are always present.

##### Quality

Attribute name	Attribute type	Value/Range	M/O/C	Comments
validity	CODED ENUM	good   invalid	M	Supported
detailQual	PACKED LIST		M	Supported
overflow	BOOLEAN	FALSE	M	Defaulted
outOfRange	BOOLEAN	TRUE   FALSE	M	Supported
badReference	BOOLEAN	TRUE   FALSE	M	Supported
oscillatory	BOOLEAN	FALSE	M	Defaulted
failure	BOOLEAN	TRUE   FALSE	M	Supported
oldData	BOOLEAN	FALSE	M	Defaulted
inconsistent	BOOLEAN	FALSE	M	Defaulted
inaccurate	BOOLEAN	FALSE	M	Defaulted
source	CODED ENUM	process	M	Defaulted
test	BOOLEAN	FALSE	M	Defaulted
operatorBlocked	BOOLEAN	FALSE	M	Defaulted

##### Analog value

Attribute name	Attribute type	Value/Range	M/O/C	Comments
i	INT32	integer value	C	
f	FLOAT32	floating point value	C	

Only one of the attributes may be present for a given instance of DATA.

##### Configuration of analogue value

Common data attribute class is not supported.

##### Range configuration

Common data attribute class is not supported.

##### Step position with transient indication

Common data attribute class is not supported.

## Pulse configuration

Attribute Name	Attribute Type	Value/Range	M/O/C	Comments
cmdQual	ENUMERATED	pulse   persistent	M	For pulse output a relay must be set to pulse mode in the device via the device Relay Setup
onDur	INT32U		M	Default = 500 ms
offDur	INT32U		M	Not supported
numPls	INT32U	1	M	Read only

## Originator

Attribute Name	Attribute Type	Value/Range	M/O/C	Comments
orCat	ENUMERATED	not-supported   bay-control   station-control   remote-control   automatic-bay   automaticstation   automatic-remote   maintenance   process	M	
orIdent	OCTET STRING64		M	

## Unit definition

Attribute Name	Attribute Type	Value/Range	M/O/C	Comments
SIUnit	ENUMERATED	See IEC61850-7-3, Tables A.1 to A.4 in Annex A	M	
multiplier	ENUMERATED	See IEC61850-7-3, Table A.5 in Annex A	O	

The default value of the multiplier is 0 and the multiplier value is 1:  $10^{*0} = 1$ .

## Vector

Attribute Name	Attribute Type	Value/Range	M/O/C	Comments
mag	AnalogueValue		M	Only one of the attributes of the AnalogueValue may be present for a given instance of DATA.
ang	AnalogueValue		O	ang attribute is used for data objects of the phzrMMXU LN (see below) only

## Point definition

Common data attribute class is not supported.

## CtlModels definition

Attribute Value	Comments
status-only	Not controllable SPS, DPS and INS
direct-with-normal-security	Controllable SPC and INC
sbo-with-normal-security	Controllable SPC and INC
directwith-enhanced-security	Not supported
sbo-with-enhanced-security	Not supported

## SboClasses definition

Attribute Value	Comments
operate-once	
operate-many	Not supported

### PackedInd32 definition

Attribute name	Attribute type	Value/Range	M/O/C	Comments
PackedInd32	PACKED LIST		M	
Ind1	BOOLEAN	TRUE   FALSE	M	
Ind2	BOOLEAN	TRUE   FALSE	M	
Ind3	BOOLEAN	TRUE   FALSE	M	
Ind4	BOOLEAN	TRUE   FALSE	M	
Ind5	BOOLEAN	TRUE   FALSE	M	
Ind6	BOOLEAN	TRUE   FALSE	M	
Ind7	BOOLEAN	TRUE   FALSE	M	
Ind8	BOOLEAN	TRUE   FALSE	M	
Ind9	BOOLEAN	TRUE   FALSE	M	
Ind10	BOOLEAN	TRUE   FALSE	M	
Ind11	BOOLEAN	TRUE   FALSE	M	
Ind12	BOOLEAN	TRUE   FALSE	M	
Ind13	BOOLEAN	TRUE   FALSE	M	
Ind14	BOOLEAN	TRUE   FALSE	M	
Ind15	BOOLEAN	TRUE   FALSE	M	
Ind16	BOOLEAN	TRUE   FALSE	M	
Ind17	BOOLEAN	TRUE   FALSE	M	
Ind18	BOOLEAN	TRUE   FALSE	M	
Ind19	BOOLEAN	TRUE   FALSE	M	
Ind20	BOOLEAN	TRUE   FALSE	M	
Ind21	BOOLEAN	TRUE   FALSE	M	
Ind22	BOOLEAN	TRUE   FALSE	M	
Ind23	BOOLEAN	TRUE   FALSE	M	
Ind24	BOOLEAN	TRUE   FALSE	M	
Ind25	BOOLEAN	TRUE   FALSE	M	
Ind26	BOOLEAN	TRUE   FALSE	M	
Ind27	BOOLEAN	TRUE   FALSE	M	
Ind28	BOOLEAN	TRUE   FALSE	M	
Ind29	BOOLEAN	TRUE   FALSE	M	
Ind30	BOOLEAN	TRUE   FALSE	M	
Ind31	BOOLEAN	TRUE   FALSE	M	
Ind32	BOOLEAN	TRUE   FALSE	M	

### 3.3 Common data classes

The following tables indicate mandatory, conditional and optional attributes of each Common Data Class (CDC) that are supported by the SA300. Mandatory attributes (M) are always present.

#### Single point status (SPS)

Attribute Name	Attribute Type	FC	M/O/C
stVal	BOOLEAN	ST	M
q	Quality	ST	M
t	TimeStamp	ST	M
d	VISIBLE STRING64	DC	O

#### Double point status (DPS)

Common data class is not supported.

### Packed 32-bit status (PackBitSt32)

Attribute Name	Attribute Type	FC	M/O/C
st32Val	PackedInd32	ST	M
d	VISIBLE STRING64	DC	O

### Integer status (INS)

Attribute Name	Attribute Type	FC	M/O/C
stVal	INT32	ST	M
q	Quality	ST	M
t	TimeStamp	ST	M
d	VISIBLE STRING64	DC	O

### Protection activation information (ACT)

Common data class is not supported.

### Directional protection activation information (ACD)

Common data class is not supported.

### Security violation counting (SEC)

Common data class is not supported.

### Binary counter reading (BCR)

Attribute Name	Attribute Type	FC	M/O/C	Comments
actVal	INT32	ST	M	
q	Quality	ST	M	
t	TimeStamp	ST	M	
units	Unit	CF	O	
pulsQty	FLOAT32	CF	M	
d	VISIBLE STRING64	DC	O	

### Measured value (MV)

Attribute Name	Attribute Type	FC	M/O/C	Comments
mag	AnalogueValue	MX	M	Only one of the attributes (i or f) of the AnalogueValue may be present for a given instance of DATA
q	Quality	MX	M	
t	TimeStamp	MX	M	
units	Unit	CF	O	
db	INT32U	CF	O	
d	VISIBLE STRING64	DC	O	

### Complex measured value (CMV)

Attribute Name	Attribute Type	FC	M/O/C	Comments
cVal	Vector	MX	M	
q	Quality	MX	M	
t	TimeStamp	MX	M	
units	Unit	CF	O	
db	INT32U	CF	O	
d	VISIBLE STRING64	DC	O	

### Sampled value (SAV)

Common data class is not supported.

## WYE

Attribute Name	Attribute Type	FC	M/O/C	Comments
phsA	CMV		C	
phsB	CMV		C	
phsC	CMV		C	
neut	CMV		C	Signed with (*) where available

## Delta (DEL)

Attribute Name	Attribute Type	FC	M/O/C	Comments
phsAB	CMV		C	
phsBC	CMV		C	
phsCA	CMV		C	

## Sequence (SEQ)

Attribute Name	Attribute Type	FC	M/O/C	Comments
c1	CMV		M	
c2	CMV		M	
c3	CMV		M	
seqT	ENUMERATED	MX	M	pos-neg-zero   dir-quad-zero

## Harmonic value (HMV)

Common data class is not supported.

## Harmonic value for WYE (HWYE)

Attribute Name	Attribute Type	FC	M/O/C	Comments
q	Quality	MX	M	
t	TimeStamp	MX	M	
phsAHar	ARRAY[0..numHar] OF Vector	MX	M	
phsBHar	ARRAY[0..numHar] OF Vector	MX	O	
phsCHar	ARRAY[0..numHar] OF Vector	MX	O	
numHar	INT16U	CF	M	numHar = 63 (no subharmonics)
numCyc	INT16U	CF	M	numCyc = 1
units	Unit	CF	O	
evalTm	INT16U	CF	M	evalTm = nominal period
frequency	FLOAT32	CF	M	frequency = nominal frequency
d	VISIBLE STRING64	DC	O	

## Harmonic value for DEL (HDEL)

Attribute Name	Attribute Type	FC	M/O/C	Comments
q	Quality	MX	M	
t	TimeStamp	MX	M	
phsABHar	ARRAY[0..numHar] OF Vector	MX	M	
phsBCHar	ARRAY[0..numHar] OF Vector	MX	O	
phsCAHar	ARRAY[0..numHar] OF Vector	MX	O	
numHar	INT16U	CF	M	numHar = 63 (no subharmonics)
numCyc	INT16U	CF	M	numCyc = 1
units	Unit	CF	O	
evalTm	INT16U	CF	M	evalTm = nominal period
frequency	FLOAT32	CF	M	frequency = nominal frequency
d	VISIBLE STRING64	DC	O	

### Controllable single point (SPC)

Attribute Name	Attribute Type	FC	M/O/C	Comments
ctlVal	BOOLEAN	CO	C	See notes below for explanation
stVal	BOOLEAN	ST	M	
q	Quality	ST	M	
t	TimeStamp	ST	M	
d	VISIBLE STRING64	DC	O	
pulseConfig	PulseConfig	CF	O	
ctlModel	CtlModels	CF	M	

Relay output operation depends on the configurable cmdQual attribute value (see pulseConfig) and the relay operation mode configured in the device via the Relay Setup as described in the following table.

cmdQual	Relay operation mode	Relay operation
pulse	Pulse/KYZ	Pulse output. ctlVal = 1 – generates a pulse (normal/KYZ) with a duration defined by the onDur attribute; ctlVal = 0 – no effect
pulse	Latched/unlatched	No effect
persistent	Pulse/KYZ	Pulse output. ctlVal = 1 – generates a pulse (normal/KYZ) with a duration defined by the pulse width pre-configured in the device setup; ctlVal = 0 – no effect
persistent	Latched/unlatched	Latched output. ctlVal = 1 – switch on, ctlVal = 0 – switch off

### Controllable double point (DPC)

Common data class is not supported.

### Controllable integer status (INC)

Attribute Name	Attribute Type	FC	M/O/C	Comments
ctlVal	INT32	CO	C	
stVal	INT32	ST	M	
q	Quality	ST	M	
t	TimeStamp	ST	M	
d	VISIBLE STRING64	DC	O	

### Binary controlled step position information (BSC)

Common data class is not supported.

### Binary controlled step position information (ISC)

Common data class is not supported.

### Controllable analog set point information (APC)

Common data class is not supported.

### Single point setting (SPG)

Common data class is not supported.

### Integer status setting (ING)

Common data class is not supported.

### Analog setting (ASG)

Common data class is not supported.

### Setting curve (CURVE)

Common data class is not supported.

### Device name plate (DPL)

Attribute Name	Attribute Type	FC	M/O/C	Comments
vendor	VISIBLE STRING255	DC	M	
model	VISIBLE STRING255	DC	O	
location	VISIBLE STRING255	DC	O	

### Logical node name plate (LPL)

Attribute Name	Attribute Type	FC	M/O/C	Comments
vendor	VISIBLE STRING255	DC	M	
swRev	VISIBLE STRING255	DC	M	
d	VISIBLE STRING255	DC	M	
configRev	VISIBLE STRING255	DC	C	LLNO only
ldNs	VISIBLE STRING255	DC	C	LLNO only

### Curve shape description (CSD)

Common data class is not supported.

## 3.4 Logical device and logical nodes

The SA300 IEC 61850 server provides a single logical device with the name MET1.

The IEC 61850 server contains logical nodes LPHD and LLNO dedicated to the SA300 unit, and a set of logical nodes for functions supported by the SA300. The names of logical nodes are fixed.

The following tables list attributes of logical nodes supported by the SA300. Attributes that are not listed in the tables are optional (O) or conditional (C) and are not supported by the SA300. Mandatory (M) attributes are always present.

The SA300 device also uses extension (E) attributes for some logical nodes.

### 3.4.1 System logical nodes: L group

#### Physical device information (LPHD class)

Attribute name	Attribute type	Explanation/Value	T	M/O/C/E	Comments
LNName	Object name	LPHD1		M	
PhyNam	DPL	Physical device name plate		M	
PhyHealth	INS	Physical device health		M	
Proxy	SPS	Indicates if this LN is a proxy		M	Defaulted to FALSE

#### Logical node zero (LLNO class)

Attribute name	Attribute type	Explanation/Value	T	M/O/C/E	Comments
LNName	Object name	LLNO		M	
<b>Common Logical Node Information</b>					
Mod	INC	Mode		M	
Beh	INS	Behavior		M	
Health	INS	Health		M	
NamePlt	LPL	Name plate		M	

### GOOSE subscription: sbsLGOS1-sbsLGOS4

Attribute name	Attribute type	Explanation/Value	T	M/O/C/E	Comments
LNName	Object name	sbsLGOS1, sbsLGOS2, sbsLGOS3, sbsLGOS4		M	
<b>Common Logical Node Information</b>					
Mod	INC	Mode		M	
Beh	INS	Behavior		M	
Health	INS	Health		M	
NamePlt	LPL	Name plate		M	
<b>Status Information</b>					
SbsSt	SPS	Status of the subscription		M	TRUE = active FALSE = not active
LastStNum	INS	Last state number received		O	
ConfRevNum	INS	Expected configuration revision number		O	

### 3.4.2 Logical nodes for protection related functions: R group

#### Disturbance recorder function (RDRE class)

##### Disturbance recorders: drRDRE1-drRDRE8

Attribute name	Attribute type	Explanation/Value	T	M/O/C/E	Comments
LNName	Object name	drRDRE1, drRDRE2, drRDRE3, drRDRE4, drRDRE5, drRDRE6, drRDRE7, drRDRE8		M	
<b>Common Logical Node Information</b>					
Mod	INC	Mode		M	
Beh	INS	Behavior		M	
Health	INS	Health		M	
NamePlt	LPL	Name plate		M	
<b>Status Information</b>					
RcdMade	SPS	Recording made		M	Set to TRUE when at least one disturbance waveform is available for a read.
FitNum	INS	Fault number		M	Indicates the last waveform series number available in a disturbance recorder.

### 3.4.3 Logical nodes for generic reference: G group

#### Generic process I/O (GGIO class)

##### Digital inputs: biGGIO1-biGGIO6

Attribute name	Attribute type	Explanation/Value	T	M/O/C/E	Comments
LNName	Object name	biGGIO1, biGGIO2, biGGIO3, biGGIO4, biGGIO5, biGGIO6		M	
<b>Common Logical Node Information</b>					
Mod	INC	Mode		M	
Beh	INS	Behavior		M	
Health	INS	Health		M	
NamePlt	LPL	Name plate		M	
<b>Status Information</b>					
Ind1 to Ind16	SPS	General indication: Digital inputs DI1-DI16 (biGGIO1) Digital inputs DI17-DI33 (biGGIO2) Digital inputs DI34-DI48 (biGGIO3)		O	TRUE = closed FALSE = open

Attribute name	Attribute type	Explanation/Value	T	M/O/C/E	Comments
		Digital inputs DI49-DI64 (biGGIO4) Digital inputs DI65-DI80 (biGGIO5) Digital inputs DI81-DI96 (biGGIO6)			

#### Relay outputs: boGGIO1-boGGIO8

Attribute name	Attribute type	Explanation/Value	T	M/O/C/E	Comments
LNName	Object name	boGGIO1, boGGIO2, boGGIO3, boGGIO4, boGGIO5, boGGIO6, boGGIO7, boGGIO8		M	
<b>Common Logical Node Information</b>					
Mod	INC	Mode		M	
Beh	INS	Behavior		M	
Health	INS	Health		M	
NamePlt	LPL	Name plate		M	
Loc	SPS	Local operation		O	
<b>Controls</b>					
SPCSO1 to SPCS08	SPC	Single point controllable status output: Relay outputs RO1-RO8 (boGGIO1) Relay outputs RO9-RO16 (boGGIO2) Relay outputs RO17-RO24 (boGGIO3) Relay outputs RO25-RO32 (boGGIO4) Relay outputs RO33-RO40 (boGGIO5) Relay outputs RO41-RO48 (boGGIO6) Relay outputs RO49-RO56 (boGGIO7) Relay outputs RO57-RO64 (boGGIO8)		O	

#### Event flags: evfGGIO1

Attribute name	Attribute type	Explanation/Value	T	M/O/C/E	Comments
LNName	Object name	evfGGIO1		M	
<b>Common Logical Node Information</b>					
Mod	INC	Mode		M	
Beh	INS	Behavior		M	
Health	INS	Health		M	
NamePlt	LPL	Name plate		M	
Loc	SPS	Local operation		O	
<b>Controls</b>					
SPCSO1 to SPCS032	SPC	Single point controllable status output for event flags FLG1-FLG32		O	

#### Setpoint status: spGGIO1

Attribute name	Attribute type	Explanation/Value	T	M/O/C/E	Comments
LNName	Object name	spGGIO1		M	
<b>Common Logical Node Information</b>					
Mod	INC	Mode		M	
Beh	INS	Behavior		M	
Health	INS	Health		M	
NamePlt	LPL	Name plate		M	
<b>Status Information</b>					
Ind1 to Ind32	SPS	General indication for setpoints SP1-SP32		O	TRUE = setpoint operated FALSE = setpoint released
StsStr	PackBitSt32	Packed single-bit indication for setpoints SP1-SP32		E	For referencing via a GOOSE publisher data

Attribute name	Attribute type	Explanation/Value	T	M/O/C/E	Comments
					set

#### Analog inputs: aiGGIO1-aiGGIO2

Attribute name	Attribute type	Explanation/Value	T	M/O/C/E	Comments
LNName	Object name	aiGGIO1, aiGGIO2		M	
<b>Common Logical Node Information</b>					
Mod	INC	Mode		M	
Beh	INS	Behavior		M	
Health	INS	Health		M	
NamePlt	LPL	Name plate		M	
<b>Measured Values</b>					
AnIn1 to AnIn8	MV	Scaled analog inputs: Analog inputs AI1-AI8 (aiGGIO1) Analog inputs AI9-AI16 (aiGGIO2)		O	

### 3.4.4 Logical nodes for control: C group

#### Interlocking (CILO class)

##### Relay blocking status: blkCILO1-blkCILO8

Attribute name	Attribute type	Explanation/Value	T	M/O/C/E	Comments
LNName	Object name	blkCILO1, blkCILO2, blkCILO3, blkCILO4, blkCILO5, blkCILO6, blkCILO7, blkCILO8		M	
<b>Common Logical Node Information</b>					
Mod	INC	Mode		M	
Beh	INS	Behavior		M	
Health	INS	Health		M	
NamePlt	LPL	Name plate		M	
<b>Status Information</b>					
EnaOpn1 to EnaOpn8	SPS	Enable Open: Relay outputs RO1-RO8 (blkCILO1) Relay outputs RO9-RO16 (blkCILO2) Relay outputs RO17-RO24 (blkCILO3) Relay outputs RO25-RO32 (blkCILO4) Relay outputs RO33-RO40 (blkCILO5) Relay outputs RO41-RO48 (blkCILO6) Relay outputs RO49-RO56 (blkCILO7) Relay outputs RO57-RO64 (blkCILO8)		M	Blocking operation is configurable via the Relay setup. A relay can only be unblocked via a control setpoint.
EnaCls1 to EnaCls8	SPS	Enable Close: Relay outputs RO1-RO8 (blkCILO1) Relay outputs RO9-RO16 (blkCILO2) Relay outputs RO17-RO24 (blkCILO3) Relay outputs RO25-RO32 (blkCILO4) Relay outputs RO33-RO40 (blkCILO5) Relay outputs RO41-RO48 (blkCILO6) Relay outputs RO49-RO56 (blkCILO7) Relay outputs RO57-RO64 (blkCILO8)		M	Blocking operation is configurable via the Relay setup. A relay can only be unblocked via a control setpoint.

### 3.4.5 Logical nodes for metering and measurement: M group

#### Metering (MMTR class)

##### Energy counters: engMMTR1

Attribute name	Attribute type	Explanation/Value	T	M/O/C/E	Comments
LNName	Object name	engMMTR1		M	
<b>Common Logical Node Information</b>					
Mod	INC	Mode		M	
Beh	INS	Behavior		M	
Health	INS	Health		M	
NamePlt	LPL	Name plate		M	
<b>Measured values</b>					
TotVAh	BCR	Apparent energy		O	Total
TotWh	BCR	Net real energy		O	Net
TotVArh	BCR	Net reactive energy		O	Net
SupWh	BCR	Real energy supply		O	Exported
SupVArh	BCR	Reactive energy supply		O	Exported
DmdWh	BCR	Real energy demand		O	Imported
DmdVArh	BCR	Reactive energy demand		O	Imported

#### Harmonics (MHAI class)

##### Harmonic demands: demMHAI 1

Attribute name	Attribute type	Explanation/Value	T	M/O/C/E	Comments
LNName	Object name	demMHAI1		M	
<b>Common Logical Node Information</b>					
Mod	INC	Mode		M	
Beh	INS	Behavior		M	
Health	INS	Health		M	
NamePlt	LPL	Name plate		M	
<b>Measured values</b>					
ThdPhV	WYE	Voltage THD demand for phase to ground		O	In 4LN3, 3LN3 and 3BLN3 wiring modes
ThdPPV	DEL	Voltage THD demand for phase to phase		O	In 4LL3, 3LL3, 3BLL3, 3DIR2, 3OP2 and 3OP3 wiring modes
ThdA	WYE	Current THD demand		O	
TddA	WYE	Current TDD demand per IEEE 519		O	
ThdAuxV	MV	Voltage THD demand for auxiliary voltage input V4		E	
ThdAuxA	MV	Current THD demand for auxiliary current input I4		E	
TddAuxA	MV	Current TDD demand for auxiliary current input I4		E	

##### Sequence of harmonics: hrmMHAI 1

Attribute name	Attribute type	Explanation/Value	T	M/O/C/E	Comments
LNName	Object name	hrmMHAI1		M	
<b>Common Logical Node Information</b>					
Mod	INC	Mode		M	
Beh	INS	Behavior		M	
Health	INS	Health		M	
NamePlt	LPL	Name plate		M	

Attribute name	Attribute type	Explanation/Value	T	M/O/C/E	Comments
<b>Measured values</b>					
HA	HWE	Sequence of harmonics current		O	
HPhV	HWE	Sequence of harmonics phase to ground voltages		O	In 4LN3, 3LN3 and 3BLN3 wiring modes
HPPV	HDEL	Sequence of harmonics phase to phase voltages		O	In 4LL3, 3LL3, 3BLL3, 3DIR2, 3OP2 and 3OP3 wiring modes

**Total harmonics: ocvMHA1**

Attribute name	Attribute type	Explanation/Value	T	M/O/C/E	Comments
LNName	Object name	ocvMHA1		M	
<b>Common Logical Node Information</b>					
Mod	INC	Mode		M	
Beh	INS	Behavior		M	
Health	INS	Health		M	
NamePlt	LPL	Name plate		M	
<b>Measured values</b>					
ThdPhV	WYE	Voltage THD for phase to ground		O	In 4LN3, 3LN3 and 3BLN3 wiring modes
ThdPPV	DEL	Voltage THD for phase to phase		O	In 4LL3, 3LL3, 3BLL3, 3DIR2, 3OP2 and 3OP3 wiring modes
ThdA	WYE	Current THD		O	
HKf	WYE	K-Factor		O	
TddA	WYE	Current TDD per IEEE 519		O	

**3-second total harmonics: osvMHA1**

Attribute name	Attribute type	Explanation/Value	T	M/O/C/E	Comments
LNName	Object name	osvMHA1		M	
<b>Common Logical Node Information</b>					
Mod	INC	Mode		M	
Beh	INS	Behavior		M	
Health	INS	Health		M	
NamePlt	LPL	Name plate		M	
<b>Measured values</b>					
ThdPhV	WYE	Voltage THD for phase to ground		O	In 4LN3, 3LN3 and 3BLN3 wiring modes
ThdPPV	DEL	Voltage THD for phase to phase		O	In 4LL3, 3LL3, 3BLL3, 3DIR2, 3OP2 and 3OP3 wiring modes
ThdA	WYE	Current THD		O	
HKf	WYE	K-Factor		O	
TddA	WYE	Current TDD per IEEE 519		O	

**Measurement (MMXU class)**

**Present demands: demMMXU1**

Attribute name	Attribute type	Explanation/Value	T	M/O/C/E	Comments
LNName	Object name	demMMXU1		M	
<b>Common Logical Node Information</b>					
Mod	INC	Mode		M	
Beh	INS	Behavior		M	
Health	INS	Health		M	
NamePlt	LPL	Name plate		M	

Measured values					
PhV	WYE	Phase to ground voltage demands		O	In 4LN3, 3LN3 and 3BLN3 wiring modes
PPV	DEL	Phase to phase voltage demands		O	In 4LL3, 3LL3, 3BLL3, 3DIR2, 3OP2 and 3OP3 wiring modes
A	WYE	Phase and neutral current demands		O	(*) See WYE
TotkWImp	MV	Total active power imported block demand		E	
TotkWExp	MV	Total active power exported block demand		E	
TotkVarImp	MV	Total reactive power imported block demand		E	
TotkVarExp	MV	Total reactive power exported block demand		E	
TotVA	MV	Total apparent power demand		O	
AuxV	CMV	Auxiliary voltage V4 demand		E	
AuxA	CMV	Auxiliary current I4 demand		E	

#### Sliding power demands: demMMXU2

Attribute name	Attribute type	Explanation/Value	T	M/O/C/E	Comments
LNName	Object name	demMMXU2		M	
Common Logical Node Information					
Mod	INC	Mode		M	
Beh	INS	Behavior		M	
Health	INS	Health		M	
NamePlt	LPL	Name plate		M	
Measured values					
TotkWImp	MV	Total active power imported sliding window demand		E	
TotkWExp	MV	Total active power exported sliding window demand		E	
TotkVarImp	MV	Total reactive power imported sliding window demand		E	
TotkVarExp	MV	Total reactive power exported sliding window demand		E	
TotVA	MV	Total apparent power sliding window demand		O	

#### Accumulated power demands: demMMXU3

Attribute name	Attribute type	Explanation/Value	T	M/O/C/E	Comments
LNName	Object name	demMMXU3		M	
Common Logical Node Information					
Mod	INC	Mode		M	
Beh	INS	Behavior		M	
Health	INS	Health		M	
NamePlt	LPL	Name plate		M	
Measured values					
TotkWImp	MV	Total active power imported accumulated demand		E	
TotkWExp	MV	Total active power exported accumulated demand		E	
TotkVarImp	MV	Total reactive power imported accumulated demand		E	
TotkVarExp	MV	Total reactive power exported accumulated demand		E	
TotVA	MV	Total apparent power accumulated demand		O	

**Predicted power demands: demMMXU4**

Attribute name	Attribute type	Explanation/Value	T	M/O/C/E	Comments
LNName	Object name	demMMXU4		M	
<b>Common Logical Node Information</b>					
Mod	INC	Mode		M	
Beh	INS	Behavior		M	
Health	INS	Health		M	
NamePlt	LPL	Name plate		M	
<b>Measured values</b>					
TotkWImp	MV	Total active power imported predicted demand		E	
TotkWExp	MV	Total active power exported predicted demand		E	
TotkVarImp	MV	Total reactive power imported predicted demand		E	
TotkVarExp	MV	Total reactive power exported predicted demand		E	
TotVA	MV	Total apparent power predicted demand		O	

**Half-cycle measurements: hcvMMXU1**

Attribute name	Attribute type	Explanation/Value	T	M/O/C/E	Comments
LNName	Object name	hcvMMXU1		M	
<b>Common Logical Node Information</b>					
Mod	INC	Mode		M	
Beh	INS	Behavior		M	
Health	INS	Health		M	
NamePlt	LPL	Name plate		M	
<b>Measured values</b>					
PhV	WYE	Phase to ground voltages		O	
PPV	DEL	Phase to phase voltages		O	
A	WYE	Phase and neutral currents		O	(*) See WYE
AuxV	CMV	Auxiliary voltage V4		E	
AuxA	CMV	Auxiliary current I4		E	
DCVlt	MV	DC voltage		E	
ExtA	WYE	Phase and neutral currents, extended inputs I1x-I3x		E	(*) See WYE
ExtAuxA	CMV	Auxiliary current, extended input I4x		E	

**One-second measurements: osvMMXU1**

Attribute name	Attribute type	Explanation/Value	T	M/O/C/E	Comments
LNName	Object name	osvMMXU1		M	
<b>Common Logical Node Information</b>					
Mod	INC	Mode		M	
Beh	INS	Behavior		M	
Health	INS	Health		M	
NamePlt	LPL	Name plate		M	
<b>Measured values</b>					
PhV	WYE	Phase to ground voltages		O	
PPV	DEL	Phase to phase voltages		O	
A	WYE	Phase and neutral currents		O	(*) See WYE
W	WYE	Phase active power		O	
VAr	WYE	Phase reactive power		O	
VA	WYE	Phase apparent power		O	

Attribute name	Attribute type	Explanation/Value	T	M/O/C/E	Comments
PF	WYE	Phase power factor		O	
TotW	MV	Total active power		O	
TotVAr	MV	Total reactive power		O	
TotVA	MV	Total apparent power		O	
TotPF	MV	Total power factor		O	
TotPFLag	MV	Total power factor lag		E	
TotPFLead	MV	Total power factor lead		E	
TotkWImp	MV	Total active power imported		E	
TotkWExp	MV	Total active power exported		E	
TotkVarImp	MV	Total reactive power imported		E	
TotkVarExp	MV	Total reactive power exported		E	
AuxV	CMV	Auxiliary voltage V4		E	
AuxA	CMV	Auxiliary current I4		E	
Hz	MV	Frequency		O	
DCVolt	MV	DC voltage		E	
AvPhV	MV	Average voltage phase to ground		E	
AvPPV	MV	Average voltage phase to phase		E	
AvA	MV	Average current		E	
ExtA	WYE	Phase currents, extended inputs I1x-I3x		E	(*) See WYE
ExtAuxA	CMV	Auxiliary current, extended input I4x		E	
AvExtA	MV	Average current, extended inputs I1x-I3x		E	

#### Phasors: phsrMMXU1

Attribute name	Attribute type	Explanation/Value	T	M/O/C/E	Comments
LNName	Object name	phsrMMXU1		M	
<b>Common Logical Node Information</b>					
Mod	INC	Mode		M	
Beh	INS	Behavior		M	
Health	INS	Health		M	
NamePlt	LPL	Name plate		M	
<b>Measured values</b>					
PhV	WYE	Phase to ground voltages (magnitude and angle)		O	In 4LN3, 3LN3 and 3BLN3 wiring modes
PPV	DEL	Phase to phase voltages (magnitude and angle)		O	In 4LL3, 3LL3, 3BLL3, 3DIR2, 3OP2 and 3OP3 wiring modes
A	WYE	Phase currents (magnitude and angle)		O	
AuxV	CMV	Auxiliary voltage V4 (magnitude and angle)		E	
AuxA	CMV	Auxiliary current I4 (magnitude and angle)		E	

#### Sequence and imbalance (MSQI class)

##### Half-cycle sequence and imbalance : hcvMSQI 1

Attribute name	Attribute type	Explanation/Value	T	M/O/C/E	Comments
LNName	Object name	hcvMSQI1		M	
<b>Common Logical Node Information</b>					
Mod	INC	Mode		M	
Beh	INS	Behavior		M	
Health	INS	Health		M	

Attribute name	Attribute type	Explanation/Value	T	M/O/C/E	Comments
NamePlt	LPL	Name plate		M	
<b>Measured values</b>					
SeqV	SEQ	Zero sequence voltage		C	
SeqA	SEQ	Zero sequence current		C	
SeqExtA	SEQ	Zero sequence current, extended inputs Ix		E	
ImbNgV	MV	Imbalance negative sequence voltage		O	
ImbNgA	MV	Imbalance negative sequence current		O	
ImbNgExtA	MV	Imbalance negative sequence current, extended inputs Ix		E	

#### One-cycle imbalance: ocvMSQI 1

Attribute name	Attribute type	Explanation/Value	T	M/O/C/E	Comments
LNName	Object name	ocvMSQI1		M	
<b>Common Logical Node Information</b>					
Mod	INC	Mode		M	
Beh	INS	Behavior		M	
Health	INS	Health		M	
NamePlt	LPL	Name plate		M	
<b>Measured values</b>					
ImbNgV	MV	Imbalance negative sequence voltage		O	
ImbNgA	MV	Imbalance negative sequence current		O	

#### Sequence components: seqMSQI 1

Attribute name	Attribute type	Explanation/Value	T	M/O/C/E	Comments
LNName	Object name	seqMSQI1		M	
<b>Common Logical Node Information</b>					
Mod	INC	Mode		M	
Beh	INS	Behavior		M	
Health	INS	Health		M	
NamePlt	LPL	Name plate		M	
<b>Measured values</b>					
SeqV	SEQ	Positive, negative and zero sequence voltage		O	
ImbNgV	MV	Imbalance negative sequence voltage		O	
ImbZroV	MV	Imbalance zero sequence voltage		O	
SeqA	SEQ	Positive, negative and zero sequence current		O	
ImbNgA	MV	Imbalance negative sequence current		O	
ImbZroA	MV	Imbalance zero sequence current		O	

#### Metering statistics (MSTA class)

##### Minimum/maximum on any phase: ocvMSTA1, osvMSTA1

Attribute name	Attribute type	Explanation/Value	T	M/O/C/E	Comments
LNName	Object name	ocvMSTA1 (one-cycle values), osvMSTA1 (one-second values)		M	

Attribute name	Attribute type	Explanation/Value	T	M/O/C/E	Comments
<b>Common Logical Node Information</b>					
Mod	INC	Mode		M	
Beh	INS	Behavior		M	
Health	INS	Health		M	
NamePlt	LPL	Name plate		M	
<b>Measured values</b>					
MinVolts	MV	Minimum voltage		O	
MinPPV	MV	Minimum voltage phase to phase		E	
MinAmps	MV	Minimum current		O	
MinW	MV	Minimum phase real power		O	
MinVAr	MV	Minimum phase reactive power		O	
MinVA	MV	Minimum phase apparent power		O	
MinPFLag	MV	Minimum phase PF lag		E	
MinPFLead	MV	Minimum phase PF lead		E	
MinThdPhV	MV	Minimum voltage THD phase to ground		E	
MinThdA	MV	Minimum current THD		E	
MinHKf	MV	Minimum K-Factor		E	
MinTddA	MV	Minimum current TDD		E	
MinIntThdPhV	MV	Minimum interharmonic voltage THD		E	
MinIntThdA	MV	Minimum interharmonic current THD		E	
MaxVolts	MV	Maximum voltage		O	
MaxPPV	MV	Maximum voltage phase to phase		E	
MaxAmps	MV	Maximum current		O	
MaxW	MV	Maximum phase real power		O	
MaxVAr	MV	Maximum phase reactive power		O	
MaxVA	MV	Maximum phase apparent power		O	
MaxPFLag	MV	Maximum phase PF lag		E	
MaxPFLead	MV	Maximum phase PF lead		E	
MaxThdPhV	MV	Maximum voltage THD phase to ground		E	
MaxThdA	MV	Maximum current THD		E	
MaxHKf	MV	Maximum K-Factor		E	
MaxTddA	MV	Maximum current TDD		E	
MaxIntThdPhV	MV	Maximum interharmonic voltage THD		E	
MaxIntThdA	MV	Maximum interharmonic current THD		E	

## 4 PICS – Protocol Implementation Conformance Statement

This chapter contains the PICS conformance statement as defined by IEC 61850-8-1 that specifies mapping to MMS and to ISO/IEC 8802-3.

### 4.1 Profile conformance

#### A-Profile support

Profile	Profile description type	Client/Subscriber	Server/Publisher	Comments
A1	Client/server		Yes	
A2	GOOSE/GSE Management		Yes	SendGOOSEMessage only
A3	GSSE			
A4	Time sync	Yes		SNTP (RFC 2030, RFC 4330)

#### T-Profile support

Profile	Profile description type	Client/Subscriber	Server/Publisher	Comments
T1	TCP/IP profile		Yes	
T2	OSI T profile			
T3	GOOSE/GSE profile	Yes	Yes	
T4	GSSE T profile			
T5	Time sync profile	Yes		

### 4.2 MMS conformance

MMS service supported CBB (server)	M/O/C/I	Supported
status	M	Yes
getNameList	C	Yes
identify	M	Yes
rename	O	
read	C	Yes
write	C	Yes
getVariableAccessAttributes	C	Yes
defineNamedVariable	O	
defineScatteredAccess	I	
getScatteredAccessAttributes	I	
deleteVariableAccess	O	
defineNamedVariableList	O	
getNamedVariableListAttributes	C	
deleteNamedVariableList	C	
defineNamedType	I	
getNamedTypeAttributes	I	
deleteNamedType	I	
input	I	
output	I	
takeControl	I	
relinquishControl	I	
defineSemaphore	I	
deleteSemaphore	I	
reportPoolSemaphoreStatus	I	
reportSemaphoreStatus	I	
initiateDownloadSequence	I	
downloadSegment	I	
terminateDownloadSequence	I	

<b>MMS service supported CBB (server)</b>	<b>M/O/C/I</b>	<b>Supported</b>
initiateUploadSequence	I	
uploadSegment	I	
terminateUploadSequence	I	
requestDomainDownload	I	
requestDomainUpload	I	
loadDomainContent	I	
storeDomainContent	I	
deleteDomain	I	
getDomainAttributes	C	Yes
createProgramInvocation	I	
deleteProgramInvocation	I	
start	I	
stop	I	
resume	I	
reset	I	
kill	I	
getProgramInvocationAttributes	I	
obtainFile	C	
defineEventCondition	I	
deleteEventCondition	I	
getEventConditionAttributes	I	
reportEventConditionStatus	I	
alterEventConditionMonitoring	I	
triggerEvent	I	
defineEventAction	I	
deleteEventAction	I	
alterEventEnrollment	I	
reportEventEnrollmentStatus	I	
getEventEnrollmentAttributes	I	
acknowledgeEventNotification	I	
getAlarmSummary	I	
getAlarmEnrollmentSummary	I	
readJournal	C	
writeJournal	O	
initializeJournal	C	
reportJournalStatus	I	
createJournal	I	
deleteJournal	I	
fileOpen	C	Yes
fileRead	C	Yes
fileClose	C	Yes
fileRename	I	
fileDelete	C	
fileDirectory	C	Yes
unsolicitedStatus	I	
informationReport	C	Yes
eventNotification	I	
attachToEventCondition	I	
attachToSemaphore	I	
conclude	M	Yes
cancel	M	Yes
getDataExchangeAttributes	NP	
exchangeData	NP	
defineAccessControlList	NP	
getAccessControlListAttributes	NP	
reportAccessControlledObjects	NP	

MMS service supported CBB (server)	M/O/C/I	Supported
deleteAccessControlList	NP	
alterAccessControl	NP	
reconfigureProgramInvocation	NP	
M: mandatory support O: optional support C: conditional support I: out of scope NP: not present (MMS minor version 1 compatibility)		

### 4.3 GOOSE conformance statement (GOOSE Services)

Service	Subscriber	Publisher	Value/comments
SendGOOSEMessage		Yes	
GetGoReference			
GetGOOSEElementNumber			
GetGoCBValues	Yes	Yes	
SetGoCBValues	Yes	Yes	GoEna, DstAddress.addr, DstAddress.APPID ConfRev - subscriber only
GSENotSupported			
GOOSE Control Block (GoCB)	Yes	Yes	

### 4.4 GSSE conformance statement (GSSE Services)

Service	Subscriber	Publisher	Value/comments
SendGSSEMessage			
GetGsReference			
GetGSSEDataOffset			
GetGsCBValues			
SetGsCBValues			
GSENotSupported			
GSSE Control Block (GsCB)			

### 4.5 SCL services (SCL conformance)

Service	M/O/C	Supported
SCL.1 SCL file implementation available (offline)	M	
SCL.2 SCL file available from implementation online	O	
SCL.3 SCL implementation reconfiguration supported online	O	

## 5 PIXIT - Protocol Implementation Extra Information for Testing

This chapter describes device specific implementation of the protocol and communication capabilities of the SA300.

### 5.1 Device configuration

The device configuration except of the listed items cannot be modified and is listed for information only.

### 5.2 ACSI models

#### Association model

Item	Value/Comments
Maximum simultaneous client associations	4
TCP Keepalive	120 s, fixed value
Authentication	Not supported
Association parameters	
TSEL	0001, fixed value
SSEL	0001, fixed value
PSEL	00000001, fixed value
AP-Title	Not required, ignored if present
AE-Qualifier	Not required, ignored if present
Maximum MMS PDU size	16000
Typical startup time after a power supply interrupt	5 s

#### Server model

Item	Value/Comments
Quality bits for analog values (MX)	
Validity	Good
OutOfRange	Not supported
Failure	Not supported
Inconsistent	Not supported
Source	Process
Other quality bits and values	Not supported
Quality bits for status values (ST)	
Validity	Good
BadReference	Not supported
Failure	Not supported
Inconsistent	Not supported
Inaccurate	Not supported
Source	Process
Other quality bits and values	Not supported
Maximum number of data values in Get/SetDataValues requests	Limited only by the MMS PDU size

#### Setting group model

Item	Value/Comments
Number of setting groups	Not supported

## Dataset model

Item	Value/Comments
Predefined Datasets in ICD file	Measurand data: LLN0\$DSet01Mx LLN0\$DSet02Mx LLN0\$DSet03Mx LLN0\$DSet04St LLN0\$DSet05Mx  Status data: LLN0\$DSet01StInd LLN0\$DSet02StInd LLN0\$DSet03StInd LLN0\$DSet04StSPCSO LLN0\$DSet05StSPCSO LLN0\$DSet06StSPCSO LLN0\$DSet07StSPCSO LLN0\$DSet08StInd LLN0\$DSet09StFitNum  GOOSE publisher data set: LLN0\$DSetGOOSE1
Maximum number of data elements in one Dataset	Depends on available memory
Maximum number of persistent Datasets	24

## Predefined Dataset members

Data Set name	Members
LLN0\$DSet01Mx	MET1/LLN0\$osvMMXU1\$MX\$AvPhV MET1/LLN0\$osvMMXU1\$MX\$AvPPV MET1/LLN0\$osvMMXU1\$MX\$AvA MET1/LLN0\$osvMMXU1\$MX\$TotW MET1/LLN0\$osvMMXU1\$MX\$TotVAr MET1/LLN0\$osvMMXU1\$MX\$TotVA MET1/LLN0\$osvMMXU1\$MX\$TotPF MET1/LLN0\$osvMMXU1\$MX\$Hz MET1/LLN0\$osvMMXU1\$MX\$DCVolt
LLN0\$DSet02Mx	MET1/LLN0\$osvMMXU1\$MX\$PhV\$phsA MET1/LLN0\$osvMMXU1\$MX\$PhV\$phsB MET1/LLN0\$osvMMXU1\$MX\$PhV\$phsC MET1/LLN0\$osvMMXU1\$MX\$PPV\$phsAB MET1/LLN0\$osvMMXU1\$MX\$PPV\$phsBC MET1/LLN0\$osvMMXU1\$MX\$PPV\$phsCA MET1/LLN0\$osvMMXU1\$MX\$A\$phsA MET1/LLN0\$osvMMXU1\$MX\$A\$phsB MET1/LLN0\$osvMMXU1\$MX\$A\$phsC MET1/LLN0\$osvMMXU1\$MX\$A\$neut
LLN0\$DSet03Mx	MET1/LLN0\$osvMMXU1\$MX\$W\$phsA MET1/LLN0\$osvMMXU1\$MX\$W\$phsB MET1/LLN0\$osvMMXU1\$MX\$W\$phsC MET1/LLN0\$osvMMXU1\$MX\$VAr\$phsA MET1/LLN0\$osvMMXU1\$MX\$VAr\$phsB MET1/LLN0\$osvMMXU1\$MX\$VAr\$phsC MET1/LLN0\$osvMMXU1\$MX\$VA\$phsA MET1/LLN0\$osvMMXU1\$MX\$VA\$phsB MET1/LLN0\$osvMMXU1\$MX\$VA\$phsC MET1/LLN0\$osvMMXU1\$MX\$PF\$phsA MET1/LLN0\$osvMMXU1\$MX\$PF\$phsB MET1/LLN0\$osvMMXU1\$MX\$PF\$phsC
LLN0\$DSet04St	MET1/LLN0\$engMMTR1\$ST\$SupWh MET1/LLN0\$engMMTR1\$ST\$DmdWh MET1/LLN0\$engMMTR1\$ST\$SupVArh MET1/LLN0\$engMMTR1\$ST\$DmdVArh
LLN0\$DSet05Mx	MET1/LLN0\$osvMMXU1\$MX\$AuxA MET1/LLN0\$osvMMXU1\$MX\$AuxV MET1/LLN0\$osvMMXU1\$MX\$ExtA\$phsA MET1/LLN0\$osvMMXU1\$MX\$ExtA\$phsB MET1/LLN0\$osvMMXU1\$MX\$ExtA\$phsC

Data Set name	Members
	MET1/LLN0\$osvMMXU1\$MX\$ExtAuxA MET1/LLN0\$osvMMXU1\$MX\$AvExtA
LLN0\$DSet01StInd	MET1/LLN0\$biGGIO1\$ST\$Ind1 MET1/LLN0\$biGGIO1\$ST\$Ind2 ... MET1/LLN0\$biGGIO1\$ST\$Ind16 MET1/LLN0\$biGGIO2\$ST\$Ind1 MET1/LLN0\$biGGIO2\$ST\$Ind2 ... MET1/LLN0\$biGGIO2\$ST\$Ind16
LLN0\$DSet02StInd	MET1/LLN0\$biGGIO3\$ST\$Ind1 MET1/LLN0\$biGGIO3\$ST\$Ind2 ... MET1/LLN0\$biGGIO3\$ST\$Ind16 MET1/LLN0\$biGGIO4\$ST\$Ind1 MET1/LLN0\$biGGIO4\$ST\$Ind2 ... MET1/LLN0\$biGGIO4\$ST\$Ind16
LLN0\$DSet03StInd	MET1/LLN0\$biGGIO5\$ST\$Ind1 MET1/LLN0\$biGGIO5\$ST\$Ind2 ... MET1/LLN0\$biGGIO5\$ST\$Ind16 MET1/LLN0\$biGGIO6\$ST\$Ind1 MET1/LLN0\$biGGIO6\$ST\$Ind2 ... MET1/LLN0\$biGGIO6\$ST\$Ind16
LLN0\$DSet04StSPCSO	MET1/LLN0\$boGGIO1\$ST\$SPCSO1 MET1/LLN0\$boGGIO1\$ST\$SPCSO2 ... MET1/LLN0\$boGGIO1\$ST\$SPCSO8 MET1/LLN0\$boGGIO2\$ST\$SPCSO1 MET1/LLN0\$boGGIO2\$ST\$SPCSO2 ... MET1/LLN0\$boGGIO2\$ST\$SPCSO8
LLN0\$DSet05StSPCSO	MET1/LLN0\$boGGIO3\$ST\$SPCSO1 MET1/LLN0\$boGGIO3\$ST\$SPCSO2 ... MET1/LLN0\$boGGIO3\$ST\$SPCSO8 MET1/LLN0\$boGGIO4\$ST\$SPCSO1 MET1/LLN0\$boGGIO4\$ST\$SPCSO2 ... MET1/LLN0\$boGGIO4\$ST\$SPCSO8
LLN0\$DSet06StSPCSO	MET1/LLN0\$boGGIO5\$ST\$SPCSO1 MET1/LLN0\$boGGIO5\$ST\$SPCSO2 ... MET1/LLN0\$boGGIO5\$ST\$SPCSO8 MET1/LLN0\$boGGIO6\$ST\$SPCSO1 MET1/LLN0\$boGGIO6\$ST\$SPCSO2 ... MET1/LLN0\$boGGIO6\$ST\$SPCSO8
LLN0\$DSet07StSPCSO	MET1/LLN0\$boGGIO7\$ST\$SPCSO1 MET1/LLN0\$boGGIO7\$ST\$SPCSO2 ... MET1/LLN0\$boGGIO7\$ST\$SPCSO8 MET1/LLN0\$boGGIO8\$ST\$SPCSO1 MET1/LLN0\$boGGIO8\$ST\$SPCSO2 ... MET1/LLN0\$boGGIO8\$ST\$SPCSO8
LLN0\$DSet08StInd	MET1/LLN0\$spGGIO1\$ST\$Ind1 MET1/LLN0\$spGGIO1\$ST\$Ind2 ... MET1/LLN0\$spGGIO1\$ST\$Ind32
LLN0\$DSet09StFltNum	MET1/LLN0\$drRDRE1\$ST\$FltNum MET1/LLN0\$drRDRE2\$ST\$FltNum ... MET1/LLN0\$drRDRE8\$ST\$FltNum
LLN0\$DSetGOOSE1	MET1/LLN0\$spGGIO1\$ST\$StsStr\$st32Val

## Reporting model

Item	Value/Comments
Predefined RCBs in the ICD file	7 URCBs: MET/LLN0\$RP\$URep01 MET/LLN0\$RP\$URep02 MET/LLN0\$RP\$URep03 MET/LLN0\$RP\$URep04 MET/LLN0\$RP\$URep05 MET/LLN0\$RP\$URep06 MET/LLN0\$RP\$URep07  7 BRCBs: MET/LLN0\$BR\$BRep01 MET/LLN0\$BR\$BRep02 MET/LLN0\$BR\$BRep03 MET/LLN0\$BR\$BRep04 MET/LLN0\$BR\$BRep05 MET/LLN0\$BR\$BRep06 MET/LLN0\$BR\$BRep07
Support of trigger conditions	
Integrity	Supported
Data change	Supported
Data update	Can be set, but there is no process data to report for this condition
Quality change	Can be set, but there is no process data to report for this condition
General interrogation	Supported
Support of optional fields	
Sequence number	Supported, default = TRUE
Report time-stamp	Supported, default = TRUE
Reason for inclusion	Supported, default = TRUE
Dataset name	Supported, default = TRUE
Data reference	Supported, default = TRUE
Buffer overflow	Supported, default = FALSE
EntryID	Supported, default = FALSE
Conf-rev	Supported, default = FALSE
Segmentation	Not supported
Sending of segmented reports	Not supported
EntryID	Only the first 4 octets are used. Remaining octets must be 0.
Buffer size	1000 octets for each BRCB

## Report Control Blocks predefined attribute values

RptID	Datset	OptFlds	BufTm	TrgOps
MET1/LLN0\$RP\$URep01	MET1/LLN0\$DSet01Mx	0x7C, 0x00	0	0x60
MET1/LLN0\$RP\$URep02	MET1/LLN0\$DSet02Mx	0x7C, 0x00	0	0x60
MET1/LLN0\$RP\$URep03	MET1/LLN0\$DSet03Mx	0x7C, 0x00	0	0x60
MET1/LLN0\$RP\$URep04	MET1/LLN0\$DSet05Mx	0x7C, 0x00	0	0x60
MET1/LLN0\$RP\$URep05	Not defined	0x7C, 0x00	0	0x60
MET1/LLN0\$BR\$BRep01	Not defined	0x7C, 0x00	0	0x60
MET1/LLN0\$BR\$BRep02	Not defined	0x7C, 0x00	0	0x60
MET1/LLN0\$BR\$BRep03	Not defined	0x7C, 0x00	0	0x60
MET1/LLN0\$BR\$BRep04	Not defined	0x7C, 0x00	0	0x60
MET1/LLN0\$BR\$BRep05	Not defined	0x7C, 0x00	0	0x60
MET1/LLN0\$BR\$BRep06	MET1/LLN0\$DSet08StInd	0x7C, 0x00	0	0x60
MET1/LLN0\$BR\$BRep07	MET1/LLN0\$DSet09StFitNum	0x7C, 0x00	0	0x60

## Report service information

Any predefined RCB attribute value may be written when RptEna is FALSE. Only existing data sets (see Dataset model table) may be used for DatSet attribute changing. Internal events, caused by data-change and quality-change trigger options only, result in immediate sending of reports or buffering events for transmission (limited by a buffer size of 1000 bytes per report).

## Control model

Item	Value/Comments
Control models supported	
Status only	Supported
Direct with normal security	Supported
Direct with enhanced security	Not supported
SBO with normal security	Supported
SBO with enhanced security	Not supported
Time activated operate (operTm)	Not supported
Test mode	Not supported
Check conditions	Not supported
Operate many	Not supported
Pulse configuration	Not supported
Service error types: instance-not-available access-violation parameter-value-inappropriate instance-locked-by-another-client failed-due-to-server-constraint generic-error	Not supported Supported Not supported Not supported Not supported Not supported

## GOOSE Publisher model

Item	Value/Comments
Maximum number of supported GOOSE data sets	1 (fixed)
Maximum data change detection delay	8 ms @ 60Hz/10 ms @ 50Hz
Initial retransmission interval	8 ms @ 60Hz/10 ms @ 50Hz for the first 5 messages
Maximum retransmission interval	Configurable from 0.5 s to 60 s
Publisher retransmission strategy	Geometric with a time multiplier of 2 after the 5th message
Declared message timeAllowedToLive time	Twice the message retransmission interval + 10 ms

## GOOSE Subscriber model

Item	Value/Comments
Maximum number of GOOSE subscriptions	4
Maximum number of GOOSE data set items	4 per subscription
Supported types of GOOSE data set items	Bstring32, Bstring16, Bstring8, FLOAT32, INT32, INT16, INT8, BOOLEAN
Mapping external GOOSE data set objects to internal variables	External indication: 16 variables of Bstring32 (ExtInd1/1:32 – ExtInd16/1:32) External measured values: 16 variables of INT32 (ExtVal1/1 – ExtVal1/16) 16 variable of FLOAT32 (ExtVal2/1 – ExtVal2/16)
Filters used to identify subscribed GOOSE messages	Destination MAC address, ETHERTYPE, APPID.
Subscriber behavior in case of mismatching GOOSE header parameters (confRev, numDatSetEntries)	All expected data objects are invalidated and zeroed.
Subscriber behavior in case of missing a GOOSE message within the timeAllowedToLive time	All expected data objects are invalidated and zeroed.

## Time and time synchronization model

Item	Value/Comments
Time synchronization sources	SNTP, IRIG-B
Time quality bits	
LeapSecondsKnown	Supported
ClockFailure	Supported
ClockNotSynchronized	Supported
Meaning of ClockFailure bit	The bit is set when the device clock is reset as a result of losing backup battery power. The bit is cleared when the device clock is

Item	Value/Comments
	updated from any external time source or via communications.
Meaning of ClockNotSynchronized bit	The bit is set in the event of using unsynchronized internal clock for time stamping in the following cases: a) if none of the external time sources is selected for time synchronization b) if no valid time synchronization message arrives in 10 minutes after the expected time from either a SNTP server, or from the IRIG-B time code input
Number of SNTP servers supported	2
SNTP polling interval	Programmable, 60 to 86400 seconds
Allowable SNTP server response time	10 seconds
Number of SNTP connection retries for each server	Up to 3 retries in 1 minute intervals
Failed SNTP server reconnection time	10 minutes

### File transfer model

Item	Value/Comments
Maximum length of names (incl. path)	64
Separator for file and directories path	'\'
Maximum number of directory entries	10 per recorder (the last 10 events recorded, starting from the newest record)
Structure of directories	COMTRADE\filename
Filename structure	drRDRE<1...8>\$.<fault number>\$.<trigger event ID>.cfg drRDRE<1...8>\$.<fault number>\$.<trigger event ID>.dat

## 5.3 Impact of the device settings

### Logical device mode

Logical device mode given by LLNO.Mod is always ON.

### Controls

The Loc attribute (available in every logical node containing controls) must be OFF to enable control execution.

### Measurement units

Measurement type	Units (precision)	
	PT = 1	PT > 1
Current	A (0.01 A)	A (0.01 A)
Voltage AC	V (0.1 V)	V (1 V)
Voltage DC	V (0.01 V)	V (0.01 V)
Power	kW, kVA, kvar (0.001 kW/kVA/kvar)	kW, kVA, kvar (1 kW/kVA/kvar)
Energy	kWh, kVAh, kvarh	kWh, kVAh, kvarh

### Process Measurement Limits

Measurement type	Measurement limits		
	Condition	min	max
Current (standard inputs)		0	Current Scale × CT Ratio <sup>1, 2</sup> (Imax)
Auxiliary current I4 (standard input)		0	Current Scale × I4 CT Ratio <sup>1, 2</sup>
Current (extended inputs)		0	30 × CTx Primary current
Auxiliary current I4x (extended input)		0	30 × I4x CTx Primary current
Voltage AC		0	Voltage Scale × PT Ratio <sup>3</sup> (Vmax)
Auxiliary voltage V4		0	Voltage Scale × V4 PT Ratio <sup>3</sup>
Voltage DC		0	9999.00
Power signed (kW, kvar)		-Vmax × Imax × 2/1000	Vmax × Imax × 2/1000 <sup>4</sup>

Measurement type	Measurement limits		
	Condition	min	max
Power unsigned (kVA, kW import/export, kvar import/export) and power demands		0	$V_{max} \times I_{max} \times 2/1000^4$
Power factor signed		-1.000	1.000
Power factor unsigned (lag, lead)		0	1.000
Analog inputs	+/-1mA	-AI full scale $\times$ 2	AI full scale $\times$ 2
	0-20mA	AI zero scale	AI full scale
	4-20mA	AI zero scale	AI full scale
	0-1mA	AI zero scale	AI full scale
	0-50mA	AI zero scale	AI full scale $\times$ 2
	+/-10V	-AI full scale	AI full scale
Unbalance		0	300.0
THD		0	999.9
TDD		0	999.9
K-Factor		1.0	999.9
Harmonics		0	100.00

#### NOTES:

1. CT Ratio = CT primary current/CT secondary current.
2. The default Current Scale is  $4 \times$  CT secondary current for devices with a 400% overload (ANSI) or  $2 \times$  CT secondary current for devices with a 200% overload (IEC). It can be changed via the Device Options setup in PAS.
3. The default Voltage Scale is 828V. It can be changed via the Device Options setup in PAS.
4. If PT Ratio = 1.0 and Pmax is greater than 9,999 kW, then it is truncated to 9,999 kW.

#### Deadbands

The db value represents the percentage of difference between max and min process measurement limits indicated in the table above. The default db (deadband) attribute values in functional constraint CF are defined in the ICD file. They can be changed to provide reasonable conditions for generating reportable events.

#### Textual descriptions

The default d (textual description of the data) attribute values in functional constraint DC are defined in the device. They can be changed for descriptions of measured/metered and status data.

## 6 Configuring IEC 61850

You can use the PAS software provided with your device to configure the GOOSE publisher and GOOSE subscriber, and to setup the deadbands for measured analog values. See the SA300 Operation Manual for more information on installation and operating PAS on your computer.

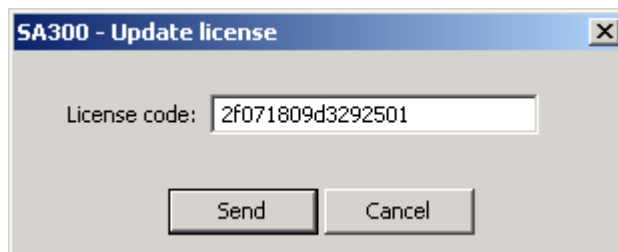
### 6.1 Licensing IEC 61850

A valid license key must be provided in the SA300 for IEC 61850 communications. The device is normally shipped with a temporary license, which is valid for a 30-day operation and then can be extended for an additional month.

A permanent license can be obtained from your local distributor for an additional fee. A device serial number must be provided in the license request. The device may also be shipped with the permanent license in the event of a pre-paid fee.

To program a license key in you device:

1. Select Administration->Update License from the Monitor menu.



2. Type in the license code.
3. Click on Send.

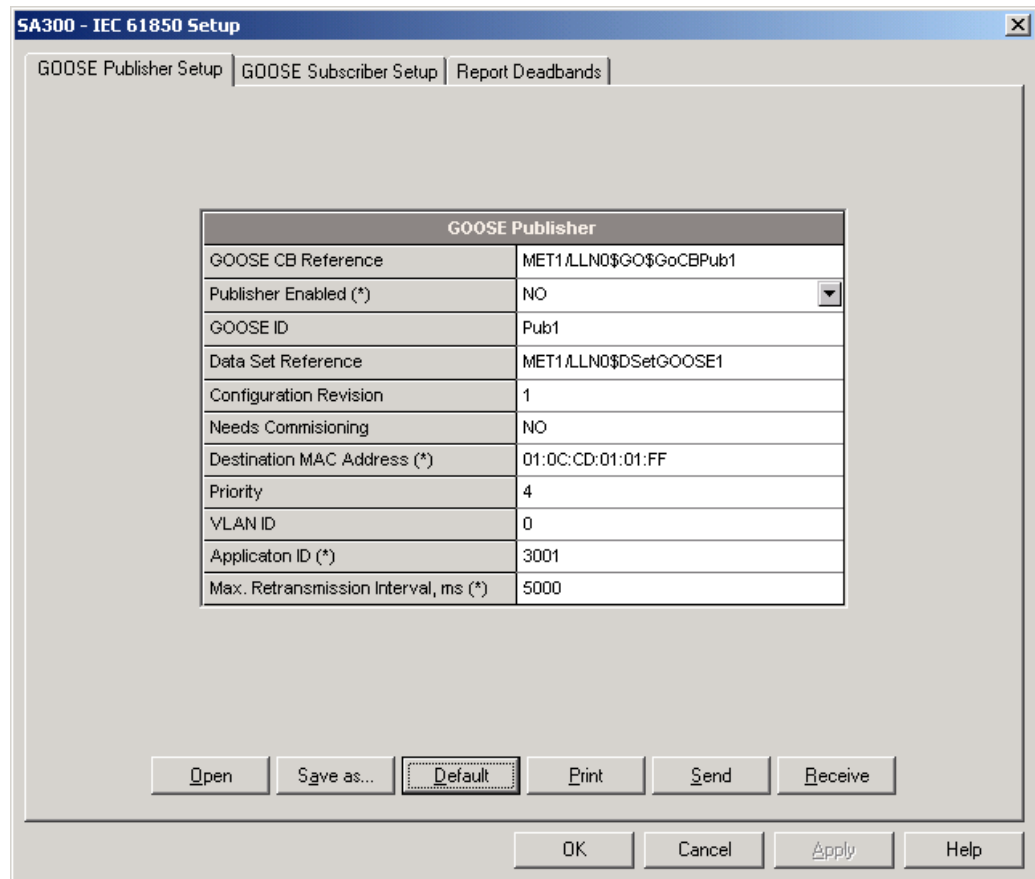
### 6.2 Configuring the GOOSE Publisher

The SA300 GOOSE publisher provides a special dataset LLN0\$DSetGOOSE1 for GOOSE communications. The dataset has a single Bitstring type variable that reflects the operation status of the 32 device setpoints.

The setpoints can be configured to monitor the status of any digital input or any measured analog value, so that any status or value change event is available for reporting to GOOSE subscribers via GOOSE messages. See the SA300 Operation Manual for more information on programming setpoints in your device.

To configure the GOOSE publisher:

1. Select IEC 61850 Setup from the Meter Setup menu, and then click on the GOOSE Publisher Setup tab.
2. Configure the destination MAC address, application ID and the maximum message retransmission interval as required for your application. Other setup attributes are not changeable and are indicated for information only.
3. Select Yes in the Publisher Enabled box to enable publisher operation.
4. Send your setup to the device.



### 6.3 Configuring the GOOSE Subscriber

The SA300 can be subscribed to messages sent by any network GOOSE device including both SA300 and non-SATEC devices.

The GOOSE subscriber supports up to 4 subscriptions with up to 4 data elements in each subscription. The location of the subscribed elements in GOOSE data sets, their basic type and mapping to the SA300 internal variables are configurable in the device. The subscription attributes may be configured manually or selected from a publishing device's ICD/SCD file.

The SA300 provides a set of internal variables in its database for mapping external GOOSE variables:

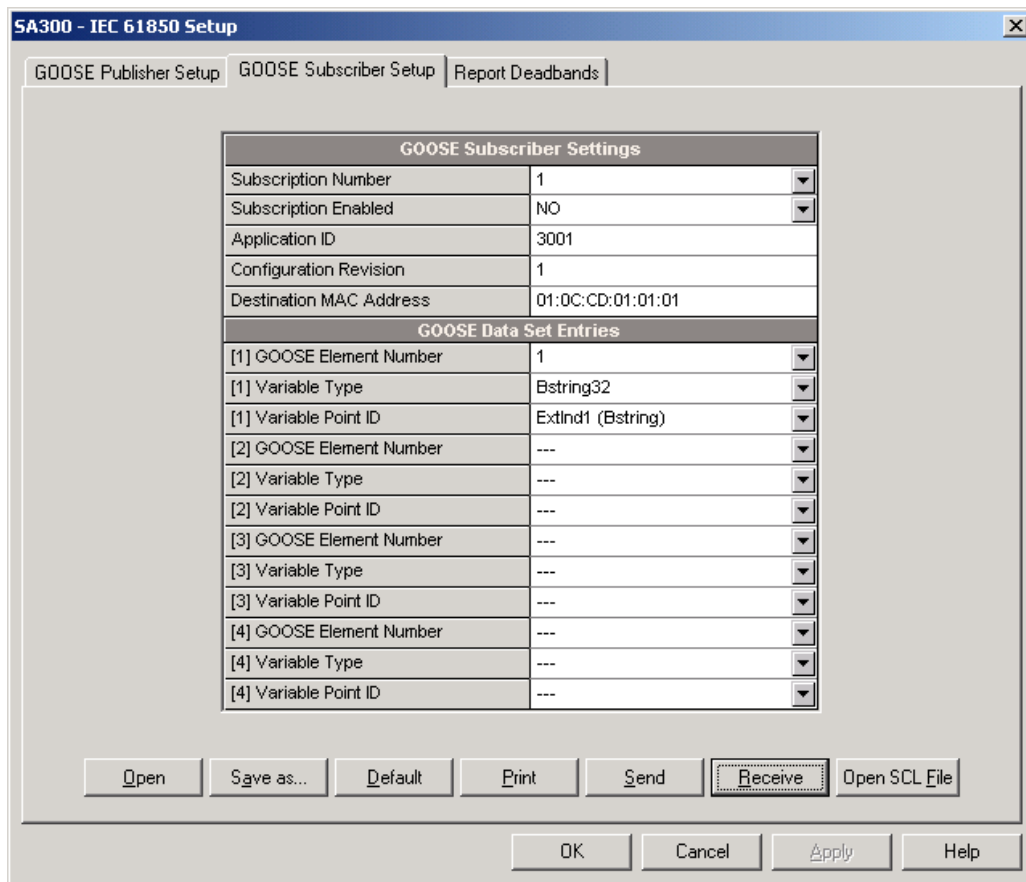
- 16 binary variables of type Bitstring[32] called external indication and designated ExtInd1 through ExtInd16 for receiving 8-bit, 16-bit and 32-bit binary data;
- 16 variables of type INT32 designated ExtVal1:1 through ExtVal1:16 for mapping signed and unsigned integer variables of any size;
- 16 variables of type FLOAT32 designated ExtVal2:1 through ExtVal2:16 for mapping single-precision floating point external variables.

When the subscriber receives GOOSE message updates, the subscribed data is copied to the internal variables that can be monitored and recorded in the device, as any other measured values. When the subscriber does not receive updates, or the declared message live time has expired, or the data set differs from the subscriber setup, the internal variables are zeroed and the non-active status is indicated in the subscription status.

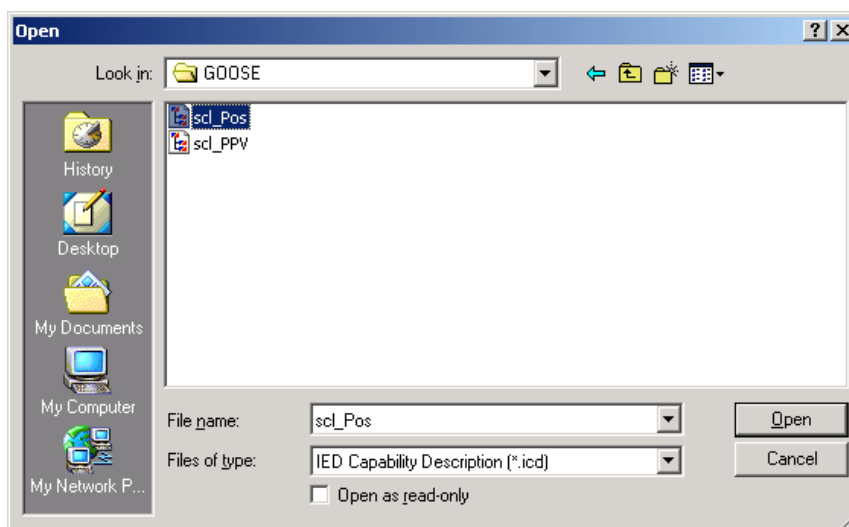
The subscription status can be monitored from an IEC 61850 client via the GOOSE subscriber logical nodes sbsLGOS1-sbsLGOS4, or from a Modbus client application via the GOOSE subscriber status register (see the SA300 Modbus Reference Guide for the register location).

To configure the GOOSE subscriber:

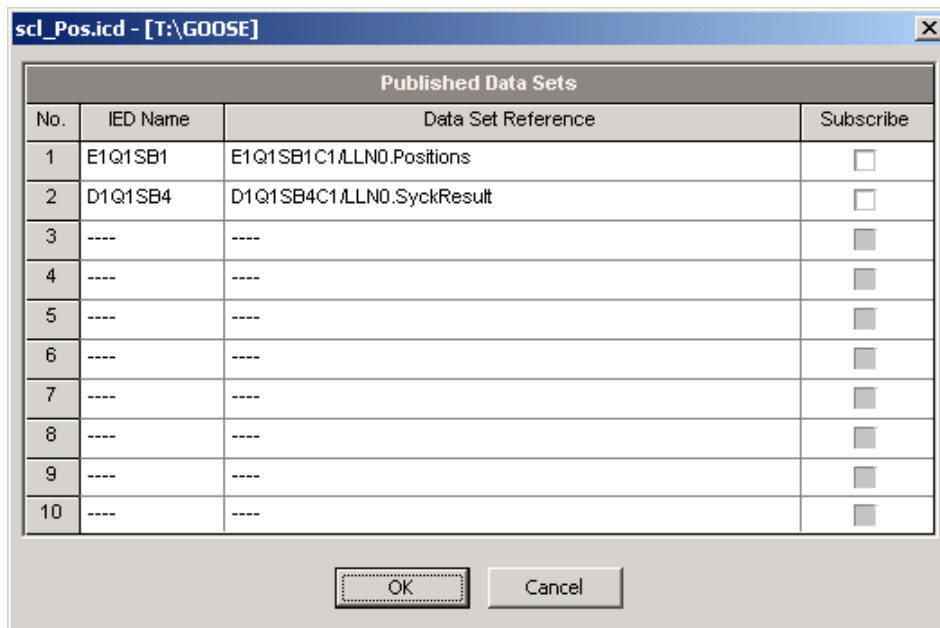
1. Select IEC 61850 Setup from the Meter Setup menu, and then click on the GOOSE Subscriber Setup tab.



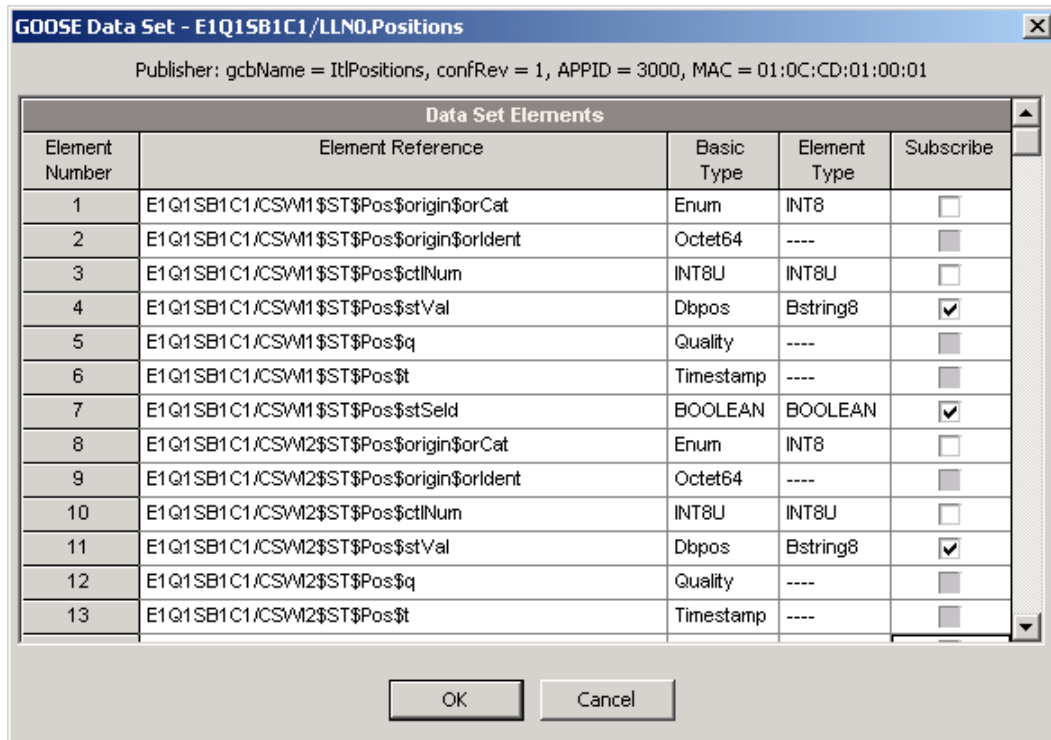
2. In the Subscription Number box, select the subscription you wish to configure.
3. If you wish to manually configure a subscription, setup the critical subscriber attributes, including the application ID, configuration revision and destination MAC address, and then specify for each message element, you want to subscribe to, its number in the GOOSE dataset, a variable data type in the message and the point ID of the internal device variable to which this element will be mapped. See the table below for allowable mapping options.
4. If you wish to configure a subscription using the GOOSE publisher data taken from an ICD or SCD configuration file, click on the "Open SCL File" button and open the file.



- PAS shows you a list of all datasets linked to GOOSE publisher control blocks that are found in the file. Check the Subscribe box for the dataset you wish to subscribe to.

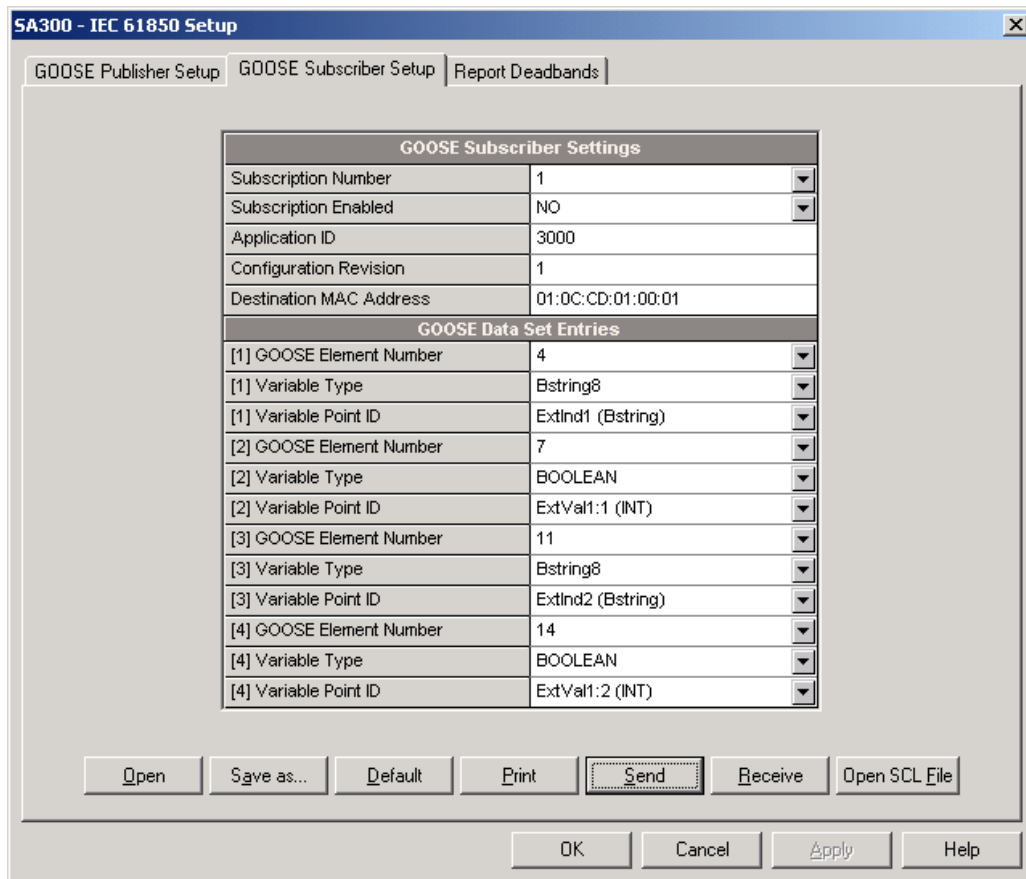


- The GOOSE publisher attributes and a list of data elements for the selected dataset are displayed as shown in the picture below. PAS also indicates a compatible internal element type to which the element can be mapped. Check the Subscribe boxes for elements you want to subscribe to, and then click OK.



You are allowed to select no more than four elements. Elements with incompatible data types are not allowed for selection.

The publisher attributes of the selected dataset and the selected data elements are copied to the current subscription. You should only select the compatible device variables to which elements will be mapped. See the table below for allowable mapping options.



7. Select Yes in the Subscription Enabled box to activate the subscription.
8. Repeat the setup for other subscriptions you wish to configure, and then send your setup to the device.

The following table shows compatible internal variables to which the GOOSE data elements can be mapped depending on the basic variable type.

Basic Data Type	Mapped Element Type	Internal Variable Point ID
BitString32	Bstring32	ExtInd1 – ExtInd16
Dbpos	Bstring8	ExtInd1 – ExtInd16
Enum	INT8	ExtVal1:1 – ExtVal1:16
INT32	INT32	ExtVal1:1 – ExtVal1:16
INT32U	INT32U	ExtVal1:1 – ExtVal1:16
INT16	INT16	ExtVal1:1 – ExtVal1:16
INT16U	INT16U	ExtVal1:1 – ExtVal1:16
INT8	INT8	ExtVal1:1 – ExtVal1:16
INT8U	INT8U	ExtVal1:1 – ExtVal1:16
BOOLEAN	BOOLEAN	ExtVal1:1 – ExtVal1:16
FLOAT32	FLOAT32	ExtVal2:1 – ExtVal2:16

## 6.4 Configuring Report Deadbands

PAS allows you to configure the deadbands used to create reports for all measured analog values at once without the need to setup individual deadbands for every data element listed in the logical nodes. If required, you can then change deadbands for individual variables via your IEC 61850 application.

Downloading the new report deadbands to the device changes deadband values for all analog data in accordance with its engineering type in all logical nodes, so it is recommended to do that before you make your individual adjustments.

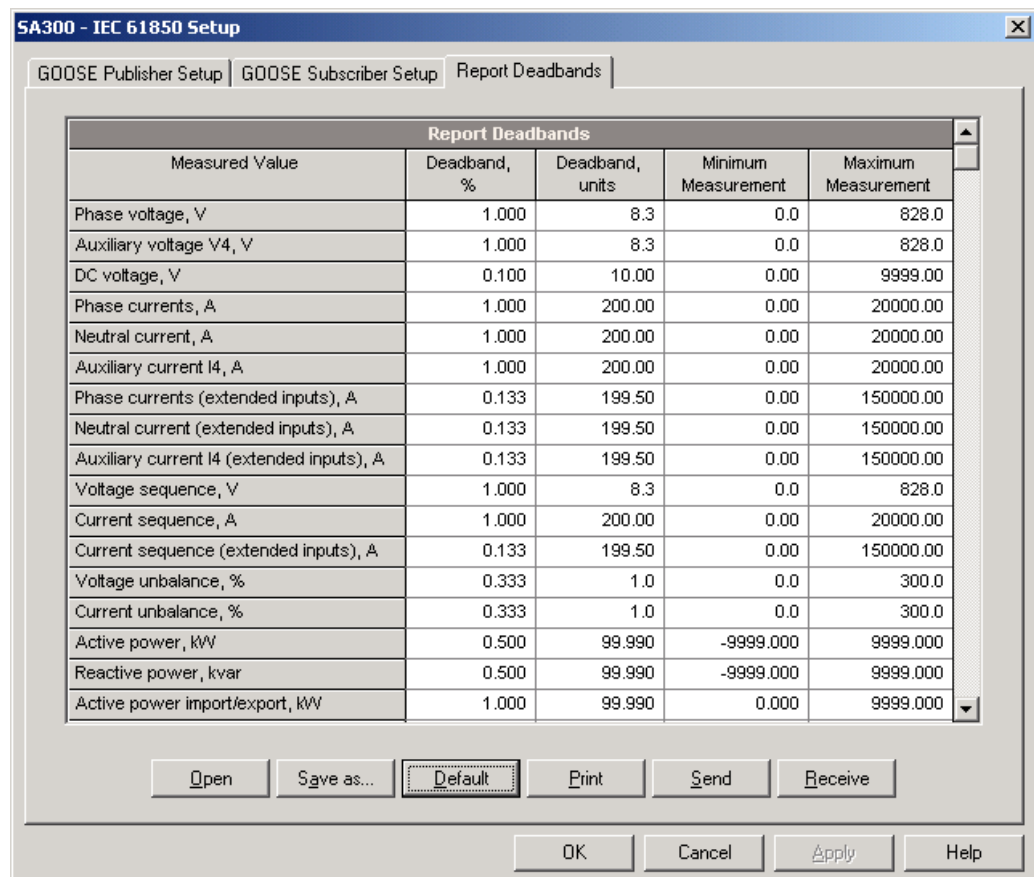
### NOTE

The process measurement scales for most analog values depend on your external PT and CT settings and on the voltage and current scales defined in the device. Configure them in your device and save to the device site database before changing report deadbands. See Basic Setup and Device Options Setup in the SA300 Operation Manual on how to configure these parameters in the device. See Programming Analog Inputs in the SA300 Operation Manual on how to setup the measurement scales for analog inputs.

To configure the deadbands for measured analog values:

1. Select IEC 61850 Setup from the Meter Setup menu, and then click on the Report Deadbands tab.

For your convenience, PAS shows the deadbands both in percent and in engineering units, and also indicates the minimum and maximum process measurements from which the percent deadband is taken.



2. Adjust the default percent deadbands to the desired values as required for your application. The allowable range is 0.001% to 50.000%. Press Enter or click with the left mouse button elsewhere on the dialog window to update the engineering deadbands.
3. Send your setup to the device.

The following table shows the default factory-set deadbands for all measured analog values.

Measured Value	Default Deadband, %
Phase voltage	1.000
Auxiliary voltage V4	1.000
DC voltage	0.100
Phase currents	1.000
Neutral current	1.000
Auxiliary current I4	1.000
Phase currents (extended inputs)	0.133
Neutral current (extended inputs)	0.133
Auxiliary current I4 (extended inputs)	0.133
Voltage sequence	1.000
Current sequence	1.000
Current sequence (extended inputs)	0.133
Voltage unbalance	0.333
Current unbalance	0.333
Active power	0.500
Reactive power	0.500
Active power import/export	1.000
Reactive power import/export	1.000
Apparent power	1.000
Active power demand	1.000
Reactive power demand	1.000
Apparent power demand	1.000
Power factor	5.000
Power factor lag/lead	10.000
Frequency	0.100
Voltage THD	0.100
Current THD	0.500
Voltage interharmonic THD	0.100
Current interharmonic THD	0.500
Current TDD	1.000
Current K-factor	0.100
Analog input #1	1.000
Analog input #2	1.000
Analog input #3	1.000
Analog input #4	1.000
Analog input #5	1.000
Analog input #6	1.000
Analog input #7	1.000
Analog input #8	1.000
Analog input #9	1.000
Analog input #10	1.000
Analog input #11	1.000
Analog input #12	1.000
Analog input #13	1.000
Analog input #14	1.000
Analog input #15	1.000
Analog input #16	1.000